

What's The Key To Your Diagnosis?

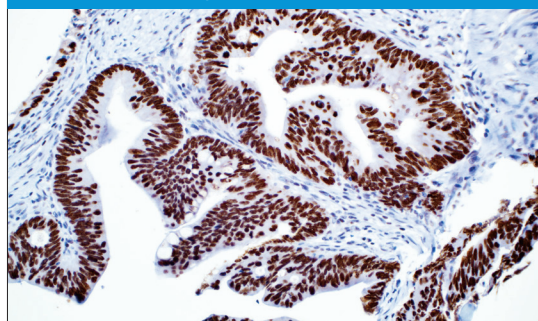
Cell Marque™ SATB2 is a novel IVD rabbit monoclonal antibody developed using RabMAb® technology by Abcam.

SATB2 is a nuclear marker suitable for routine use in panels classifying carcinomas of unknown primary (CUP) origin. Anti-SATB2 is utilized in a diagnostic panel with other markers for the lower GI tract, including cytokeratin 20, CDX-2, cadherin-17, and villin. Cell Marque's SATB2 antibody has a similar level of sensitivity and a higher level of specificity for lower GI tumors than the aforementioned markers, making it a key addition to the CUP IHC tumor panel. Additionally, anti-SATB2 does not have the same reactivity in gastric, esophageal, and pancreatic adenocarcinomas that anti-CDX-2 exhibits.

SATB2 rabbit monoclonal is available through Cell Marque and Cell Marque's international distributors.

- ▶ When utilized with cytokeratin 20 only, literature suggests that SATB2 positively identifies 97% of all colorectal carcinomas (Magnusson K, et al. *Am J Surg Pathol.* 2001; 35:937-48)
- ▶ When utilized in the cytokeratin 7 and cytokeratin 20 panel, studies show SATB2 exhibiting 93% sensitivity and 100% specificity for colorectal carcinoma (Anca D, et al. *AJCP.* 2014; 141:630-38)
- ▶ SATB2 has been seen to identify medullary carcinomas of the colon that are often cytokeratin 20 and CDX-2 negative (Lin F, et al. *Arch Pathol Lab Med.* 2014; 138:1015-26)

visit www.cellmarque.com/SATB2 for more information



CELL MARQUE

RabMAb®
Technology from Abcam

Cell Marque™ - a Sigma-Aldrich® company
Toll-Free: 800.665.7284 • Direct: 916.746.8900
service@cellmarque.com • www.cellmarque.com

©2015 Sigma-Aldrich Co. LLC. All rights reserved. SIGMA-ALDRICH and Cell Marque are trademarks of Sigma-Aldrich Co. LLC.