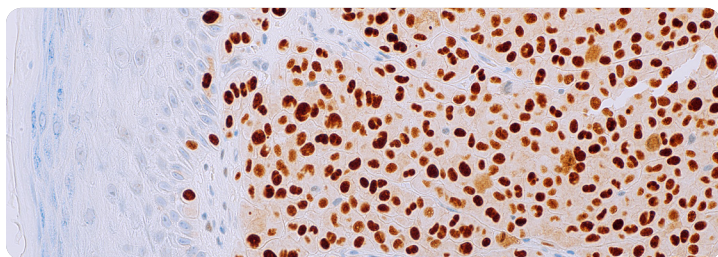


Above:
CD4 (EP204)

View more at:
cellmarque.com/specialties

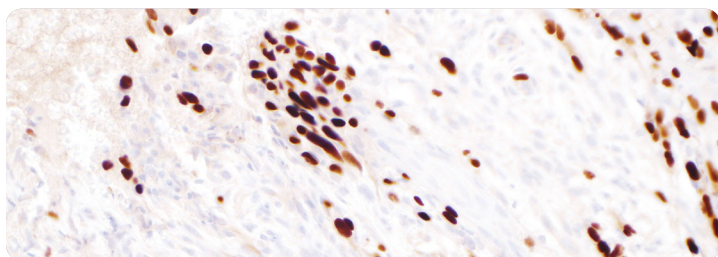


Cell Marque™ Tissue Diagnostics Dermatopathology



PRAME (EP461)

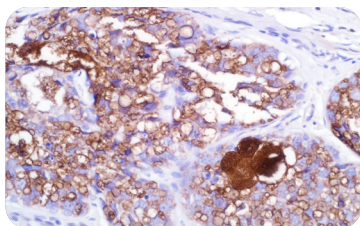
PRAME (PReferentially-expressed Antigen in MELanoma) is a gene encoded on the 22q11-22 chromosomal sequence and encodes a 509 amino acid residue protein. PRAME is a melanoma antigen that is preferentially expressed in tumors and is recognized by cytotoxic T lymphocytes. PRAME can be used to distinguish between malignant melanoma cells and nevus cells, and therefore may be useful for diagnostic purposes to support a suspected case of melanoma. PRAME is considered a cancer-testis antigen (CTA) and is not strongly expressed in most other normal tissues. PRAME is positively expressed in about half of uveal melanomas, and the majority of mucosal melanomas.



SOX-10 (EP268)

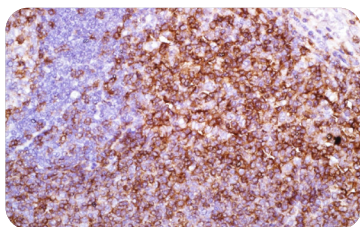
Rabbit Monoclonal SOX-10 is a transcription factor involved in neural crest and peripheral nervous system development and acts as a nucleocytoplasmic shuttle protein. SOX-10 is expressed in melanocytic lineages and is a sensitive marker of melanoma for conventional, and desmoplastic subtypes. In normal tissues, SOX-10 is expressed in melanocytes and myoepithelial cells.

Dermatopathology



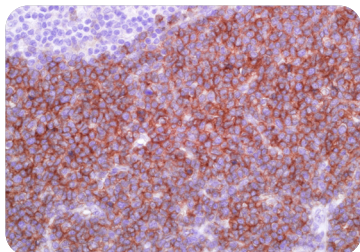
Adipophilin (polyclonal)

Anti-adipophilin targets PLIN2 (perilipin 2) protein belonging to the perilipin family associated with lipid globule surface membranes and intracellular lipid storage droplets in various normal cells. It is helpful in the identification of intracytoplasmic lipids, as seen in sebaceous lesions. Anti-adipophilin is useful in labeling the sebocytes, hence being valuable for the identification of sebaceous carcinoma.



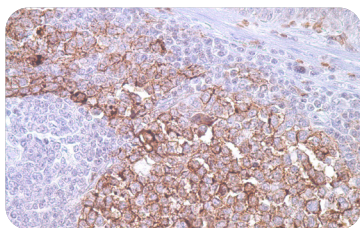
CD4 (EP204)

Rabbit monoclonal CD4 is expressed on the surface of T-helper/regulatory T cells, monocytes, macrophages, and dendritic cells. Anti-CD4 is used in the immunophenotyping of lymphoproliferative disorders including cutaneous lymphomas such as CD4+ mycosis fungoides.



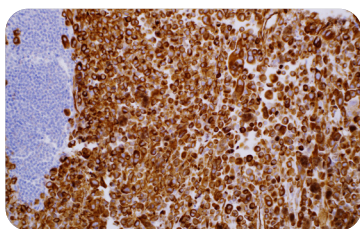
CD123 (6H6)

Blastic plasmacytoid dendritic cell neoplasm (BPDCN), previously known as CD4+/CD56+ hematodermic neoplasm or blastic NK-cell lymphoma, is a malignant neoplasm composed of immature hematopoietic precursors of plasmacytoid dendritic cells. Myeloid leukemia cutis (LC), myeloid sarcoma, and large aggressive B-cell lymphomas should be differentiated from BPDCN. Studies have indicated that a panel that includes antibodies against CD4, CD56, CD123, and TCL-1 can appropriately distinguish between myeloid LC and BPDCN.



KBA.62 (KBA.62)

KBA.62 is a useful marker for melanoma, specifically in desmoplastic/ spindle cell cases and in the context of micrometastasis in sentinel lymph node. Studies have shown a similar sensitivity to S100 protein and a higher sensitivity than HMB-45 for melanocytic proliferations. Most cases of desmoplastic and spindle cell melanomas are strongly positive for KBA.62, unlike other melanocyte markers. KBA.62 has a clean, distinct visualization because of its membranous staining pattern.



Nestin (10C2)

Mouse monoclonal Nestin (10C2) expression is significantly increased in melanoma and correlated with more advanced stages of the disease. It is a useful test for cases of HMB-45-negative, amelanotic and melanotic, non-desmoplastic melanoma. An immunohistochemical analysis identified nestin-positive cells in 84% (35/42) of primary melanoma and 83% (10/12) of metastatic melanoma.

For full references and product details please see the product insert.

Intended Use: These products herein are intended for laboratory use in the detection of their respective proteins in formalin-fixed, paraffin-embedded tissue stained in qualitative immunohistochemistry (IHC) testing. These products are not a stand-alone diagnostic, and cannot be used for diagnosis, treatment, prevention, or mitigation of disease.

CELL MARQUE™
RabMAb™
Technology from Abcam

USA
Toll Free: 800.665.7284
Phone: 916.746.8900
Fax: 916.746.8989
Email: service@cellmarque.com
www.cellmarque.com

CANADA
Phone: +1 916.746.8900
Fax: +1 916.746.8989
Email: international@cellmarque.com
www.cellmarque.com

MilliporeSigma
400 Summit Drive
Burlington, MA 01803
www.sigmaaldrich.com

Copyright © 2021 Merck KGaA, Darmstadt, Germany and/or its affiliates. All Rights Reserved. MilliporeSigma, the vibrant M, Sigma-Aldrich and Cell Marque are trademarks of Merck KGaA, Darmstadt, Germany or its affiliates. All other trademarks are the property of their respective owners.

