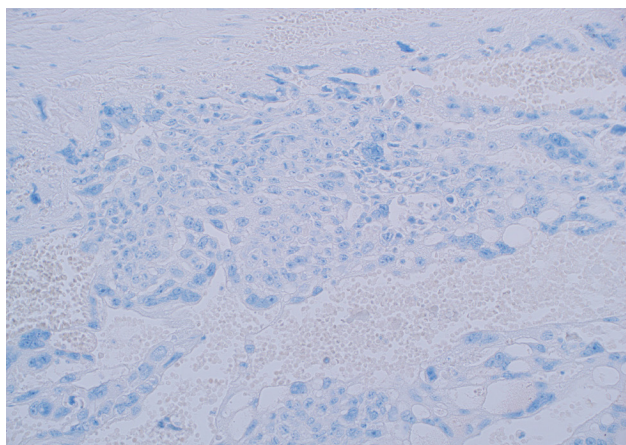
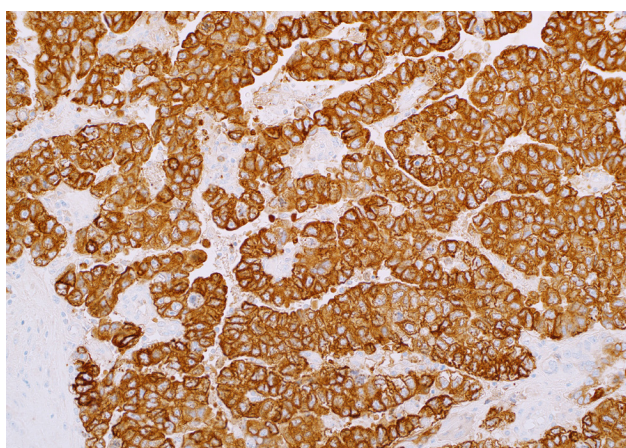
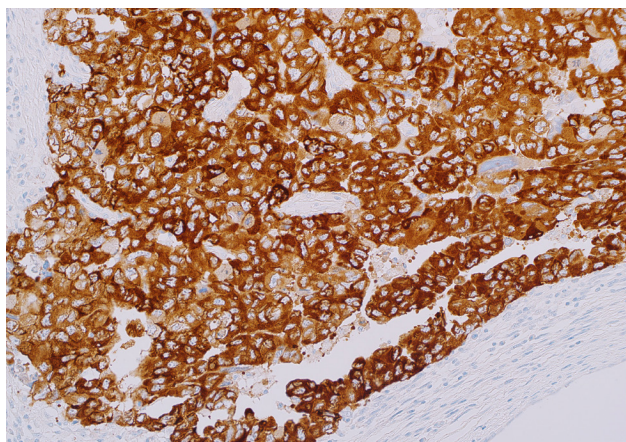


## Spotlight on: LIN28 (EP150)



*Top: Yolk sac tumor is strongly positive for LIN28.*

*Center: LIN28 strongly diffusely stains embryonal carcinoma.*

*Bottom: Choriocarcinoma is usually negative for LIN28.*

**G**erm cell tumors (GCTs) are neoplasms formed by immature cells that would eventually develop into eggs or sperm. Ninety percent of germ cell tumors are gonadal. The remainder are extragonadal, often occurring in the abdomen, central nervous system, or the mediastinum. Subtypes of GCTs include seminoma/dysgerminoma, embryonal carcinoma, yolk sac tumor, choriocarcinoma, and teratoma. Identifying and subtyping germ cell tumors can be challenging, but doing so is important for proper course of treatment.

LIN28 is an RNA-binding protein that has been implicated as an essential regulator in both germ cell development and malignancy. This has made LIN28 a highly sensitive and specific marker for primary extragonadal seminomas/dysgerminomas, embryonal carcinomas, and yolk sac tumors. PLAP, commonly used as a pan-germ cell tumor marker, cross reacts with various non-germ cell tumors, such as some soft tissue tumors and some lung and GI carcinomas, while LIN28 has minimal reactivity with non-germ cell tumors.

### Benefits of LIN28 from Cell Marque™:

- *In vitro* diagnostic
- Optimized for use on multiple automated platforms
- Higher sensitivity than SALL4 for extragonadal yolk sac tumors<sup>1</sup>

### Ordering Information:

Volume .....	Part No.	Volume .....	Part No.
0.1 ml, concentrate .....	464R-14	1 ml, prediluted .....	464R-17
0.5 ml, concentrate .....	464R-15	7 ml, prediluted .....	464R-18
1 ml, concentrate .....	464R-16	Positive control slides .....	464S

### References:

1. Cao D, et al. Mod Pathol. 2011 Feb;24(2):288-96.

*Using RabMAb® technology from Abcam, LIN28 has the sensitivity of a rabbit antibody with the specificity and cleanliness of a monoclonal antibody for a strong signal to noise ratio.*