

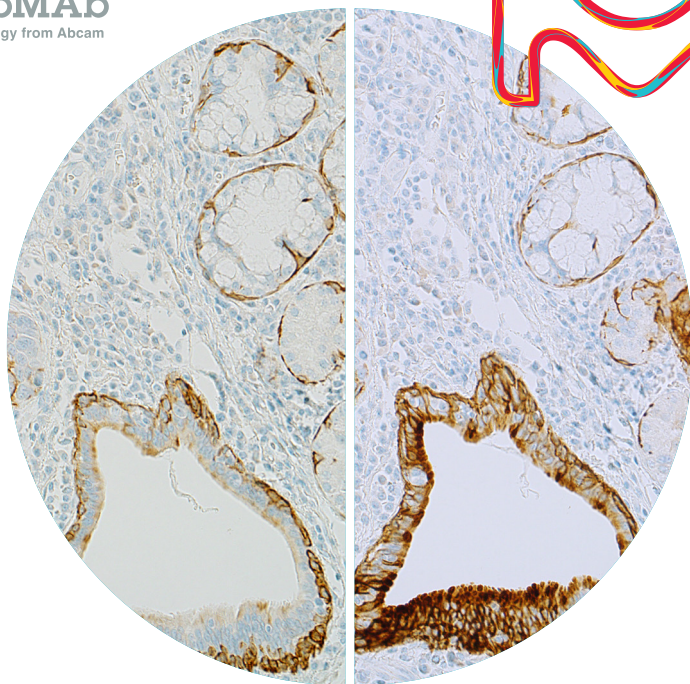
See the Difference?

Millipore
SIGMA

 CELL MARQUE™

RabMAb®

Technology from Abcam



The patented RabMAb® technology offers rabbit monoclonal antibodies with high sensitivity and specificity for reliable results.

The life science business of Merck KGaA, Darmstadt, Germany operates as MilliporeSigma in the U.S. and Canada.

Sigma-Aldrich®
Lab & Production Materials

Passion. Product. Patient.

Cell Marque™ Tissue Diagnostics, in a proud partnership with Abcam, exclusively offers a robust portfolio of highly specific and sensitive rabbit monoclonal antibodies created with their patented RabMAb® technology.

The newest releases were hand-selected to offer you the advanced tools necessary to provide the best in patient care.

Features and Benefits of RabMAb® technology:

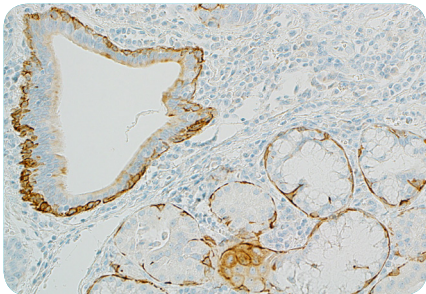
Feature	Benefit
Low background	Provides more specific and sensitive detection of their target with lower background. These antibodies bind to their target with greater affinity, enabling higher signal-to-noise ratio at any concentration compared to its mouse counterpart.
Excellent for IHC	RabMAb® permit higher working dilutions and can be used on various tissue fixatives such as FFPE. With the higher sensitivity and specificity, staining results are more intensified for IHC advanced staining.
High specificity	Able to distinguish between similar proteins which mouse monoclonals can be specific, but mouse monoclonals are not able to recognize subtle changes in epitopes.
Recognition of diverse and novel epitope	Rabbit immune system has lower immune dominance and larger B-cell repertoire. This allows for wider epitope recognition during antibody development.

To learn more about the advantages of rabbit monoclonals, visit [Abcam.com/RabMAb](https://www.abcam.com/RabMAb)

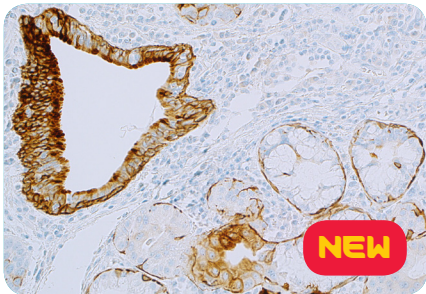
Cytokeratin 5 & 6

Esophageal Squamous Cell Carcinoma

Mouse Monoclonal,
clone: D5 & 16B4

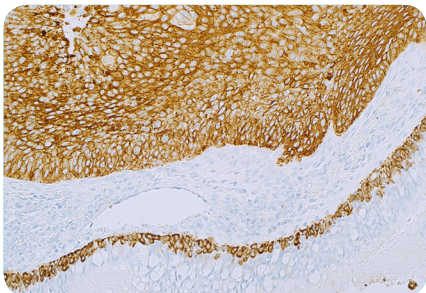


Rabbit Monoclonal,
clone: EP24 & EP67

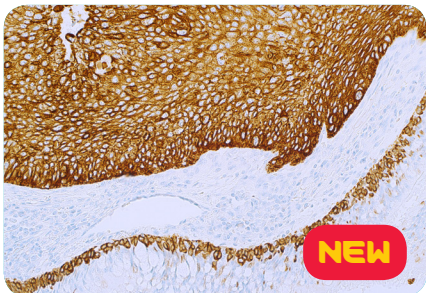


Lung Squamous Cell Carcinoma

Mouse Monoclonal,
clone: D5 & 16B4



Rabbit Monoclonal,
clone: EP24 & EP67



Ordering Information

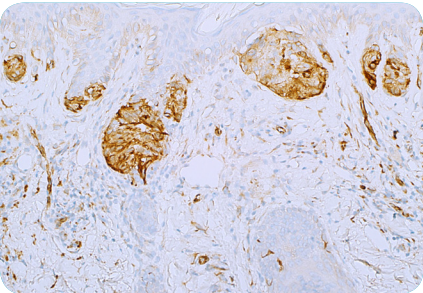
Description	Cat. No.
Cytokeratin 5 & 6 (EP24 & EP67) Rabbit Monoclonal Primary Antibody	
0.1 mL concentrate	356R-14
0.5 mL concentrate	356R-15
1.0 mL concentrate	356R-16
1.0 mL predilute	356R-17
7.0 mL predilute	356R-18
Positive Control Slides	356S

Nestin

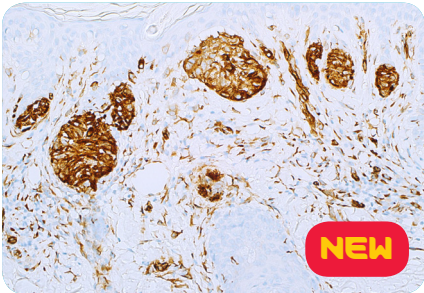
Nestin expression is significantly increased in melanoma and correlated with more advanced stages of the disease. Nestin immunoreactivity is also reported in melanoma cells of HMB-45-negative amelanotic and melanotic, non-desmoplastic melanoma. Nestin is also useful in subclassifying breast carcinoma.

Melanoma

Mouse Monoclonal,
clone: 10C2



Rabbit Monoclonal,
clone: EP287



Ordering Information

Description	Cat. No.
Nestin (EP287) Rabbit Monoclonal Primary Antibody	
0.1 mL concentrate	388R-14
0.5 mL concentrate	388R-15
1.0 mL concentrate	388R-16
1.0 mL predilute	388R-17
7.0 mL predilute	388R-18
Positive Control Slides	388S

Need p16?

Be on the look out for p16^{INK4A} (JC2)
this summer!

Ordering Information

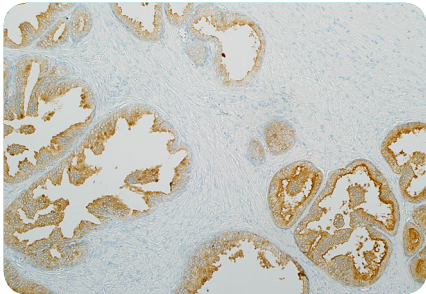
Description	Cat. No.
p16 ^{INK4A} (JC2) Mouse Monoclonal Antibody	
0.1 mL	416M-14-ASR
0.5 mL	416M-15-ASR
1.0 mL	416M-16-ASR
1.0 mL Sample Size	416M-17-ASR
7.0 mL	416M-18-ASR
25 mL	416M-10-ASR

PSA

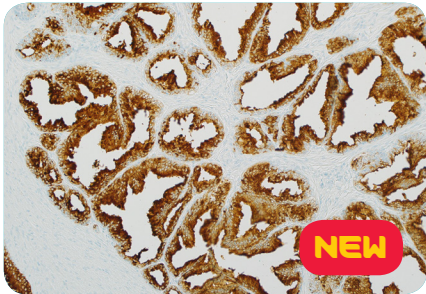
Prostate-Specific Antigen (PSA) is strongly expressed in both normal and neoplastic prostatic tissue. Anti-PSA is most useful in determining the prostatic origin of carcinomas in non-prostate tissues (metastatic disease) using IHC techniques.

Prostate Carcinoma

Mouse Monoclonal,
clone: ER-PR8



Rabbit Monoclonal,
clone: EP109



Ordering Information

Description	Cat. No.
PSA (EP109) Rabbit Monoclonal Primary Antibody	
0.1 mL concentrate	324R-14
0.5 mL concentrate	324R-15
1.0 mL concentrate	324R-16
1.0 mL predilute	324R-17
7.0 mL predilute	324R-18
Positive Control Slides	324S



**Also available:
Rabbit Monoclonal,
TCL1 (EP105)**

Ordering Information

Description	Cat. No.
TCL1 (EP105) Rabbit Monoclonal Primary Antibody	
0.1 mL concentrate	357R-14
0.5 mL concentrate	357R-15
1.0 mL concentrate	357R-16
1.0 mL predilute	357R-17
7.0 mL predilute	357R-18
Positive Control Slides	357S

Sigma-Aldrich®

Lab & Production Materials

MilliporeSigma
400 Summit Drive
Burlington, MA 01803

SigmaAldrich.com

To place an order or receive technical assistance

Toll Free: 800.665.7284

Phone: 916.746.8900

Fax: 916.746.8989

Email: service@cellmarque.com

www.cellmarque.com

© 2019 Merck KGaA, Darmstadt, Germany and/or its affiliates. All Rights Reserved.
MilliporeSigma, Sigma-Aldrich, Cell Marque and the Vibrant M are trademarks of
Merck KGaA, Darmstadt, Germany. All other trademarks are the property
of their respective owners.

2019 - 20181 Rev 0.0
03/2019