

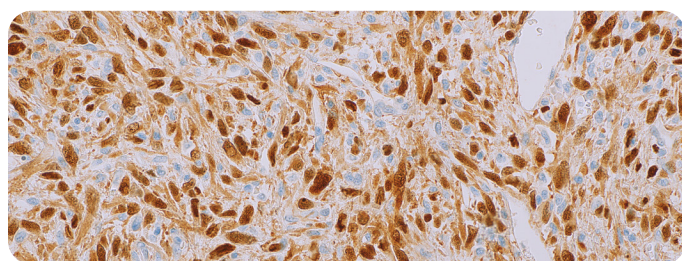
Cell Marque™ Tissue Diagnostics

CDK4 (DCS-31) & MDM2 (IF2)**The New Duo for Soft Tissue Differentiation**

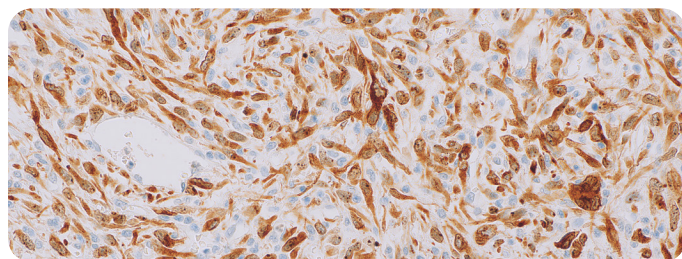
Well-differentiated liposarcoma is a malignant, non-metastasizing tumor that can present with similar histological characteristics as benign lipoma lesions and has a higher recurrence rate. Advanced immunohistochemistry staining can be performed to help distinguish the well-differentiated liposarcoma (atypical lipomatous tumor) from lipoma.

The CDK4 protein is frequently overexpressed in well-differentiated liposarcoma and is rarely observed in lipomas. Likewise, anti-MDM2 has been demonstrated to be useful in distinguishing between these, with the neoplastic cells positive in the former lesion and negative in lipoma.*

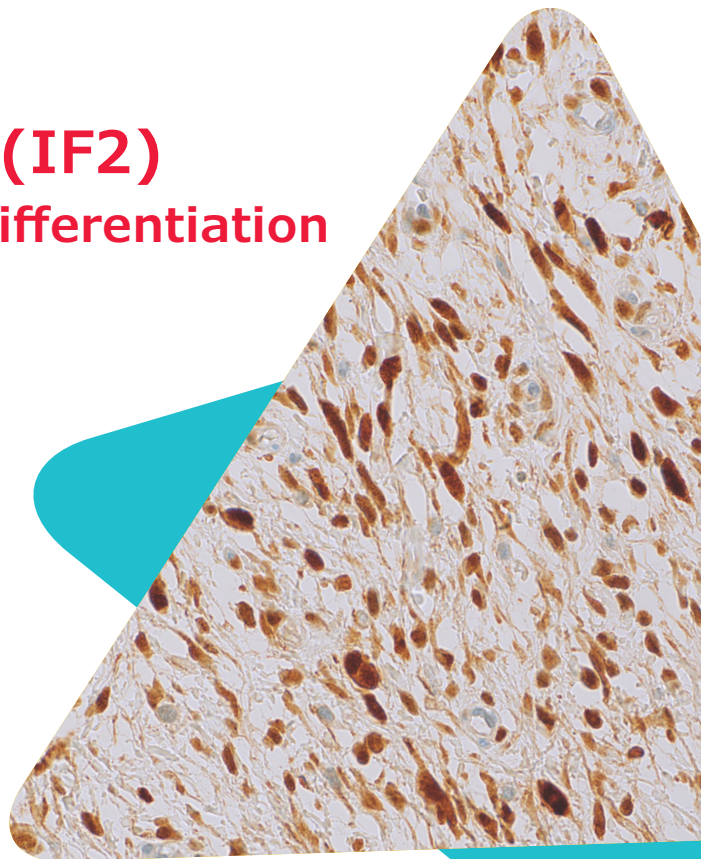
Due to the protein expression differences between these lesions, both soft tissue markers are useful in an immunohistochemistry grid to aid in the differential diagnosis between well-differentiated liposarcoma and lipoma.*



CDK4 on dedifferentiated liposarcoma



MDM2 on dedifferentiated liposarcoma



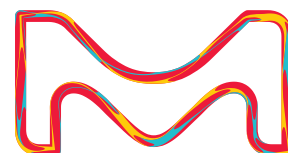
CDK4 on well-differentiated liposarcoma

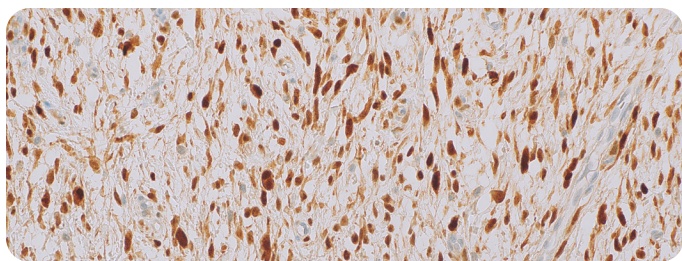
CDK4 (DCS-13)

Product Description	Cat. No.
0.1 mL concentrate	478M-94
0.5 mL concentrate	478M-95
1.0 mL concentrate	478M-96
1.0 mL predilute	478M-97
7.0 mL predilute	478M-98

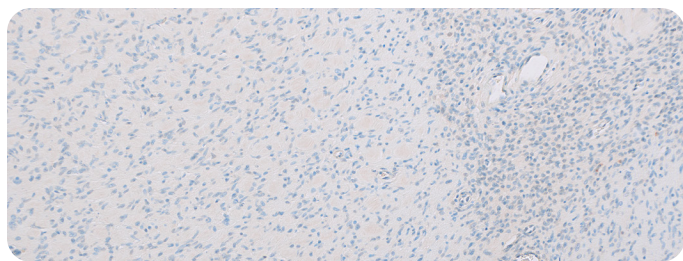
MDM2 (IF2)

Product Description	Cat. No.
0.1 mL concentrate	479M-94
0.5 mL concentrate	479M-95
1.0 mL concentrate	479M-96
1.0 mL predilute	479M-97
7.0 mL predilute	479M-98

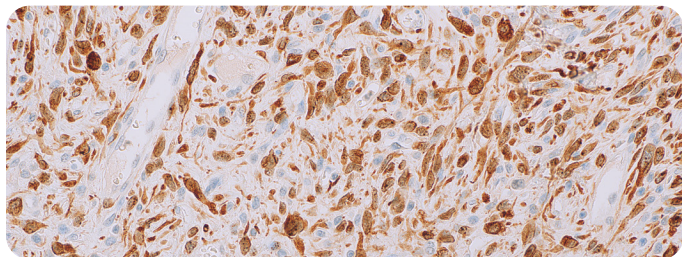




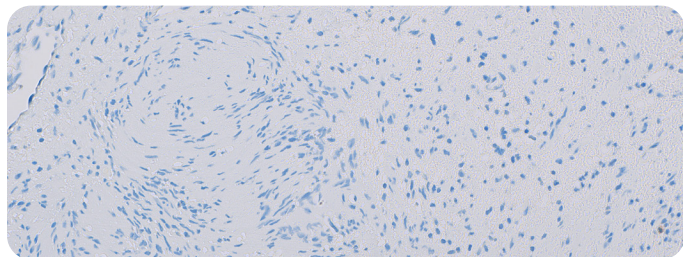
CDK4 on well-differentiated liposarcoma



CDK4 on neurofibroma



MDM2 on liposarcoma



MDM2 on schwannoma

Intended Use:

These products herein are intended for laboratory use in the detection of their respective proteins in formalin-fixed, paraffin-embedded tissue stained in qualitative immunohistochemistry (IHC) testing. These products are not a stand-alone diagnostic, and cannot be used for diagnosis, treatment, prevention, or mitigation of disease.

Product Information:

Visualization: Nuclear

Controls: Well-differentiated liposarcoma,
dedifferentiated liposarcoma

Dilution Range: 1:25-1:50

Associated Specialty: Soft Tissue Pathology

*References:

- Uhrinova S, et al. J Mol Biol. 2005; 350:587-98.
- Arici A, et al. Indian J Cancer. 2013; 50:164-9.
- Ware PL, et al. Am J Clin Pathol. 2014; 141:334-41.
- Binh MB, et al. Am J Clin Pathol. 2006; 125:693-7.
- Momand J, et al. Nucleic Acids Res. 1998; 26:3453-9.
- Thway K, et al. Am J Surg Pathol. 2012; 36:462-9.
- Aleixo PB, et al. J Clin Pathol. 2009; 62:1127-35.
- Binh MBN, et al. Am J Surg Pathol. 2005; 29:1340-7.

USA
Toll Free: 800.665.7284
Phone: 916.746.8900
Fax: 916.746.8900
Email: service@cellmarque.com
www.cellmarque.com

CANADA
Phone: +1 916.746.8900
Fax: +1 916.746.8900
Email: international@cellmarque.com
www.cellmarque.com

MilliporeSigma
400 Summit Drive
Burlington, MA 01803
www.SigmaAldrich.com

Copyright © 2021 Merck KGaA, Darmstadt, Germany and/or its affiliates. All Rights Reserved. MilliporeSigma, the vibrant M, Sigma-Aldrich and Cell Marque are trademarks of Merck KGaA, Darmstadt, Germany or its affiliates. All other trademarks are the property of their respective owners. Detailed information on trademarks is available via publicly accessible resources.

