

## Cell Marque™ Tissue Diagnostics

## PSMA (EP192)

## Rabbit Monoclonal Primary Antibody

Prostate-specific membrane antigen (PSMA) is a type II transmembrane glycoprotein with enzymatic activity.<sup>1,2</sup> PSMA is expressed in normal prostate epithelial cells as well as prostate neoplastic cells. It has been demonstrated that PSMA expression is increased in prostate cancer and is correlated with disease progression.<sup>2</sup> Although highly sensitive and specific for prostate, PSMA also labels a subset of non-prostate tissues, including the small intestine and kidney.<sup>2,3</sup> PSMA is useful for identifying metastatic prostate carcinoma<sup>4</sup> and distinguishing prostate carcinoma from urothelial carcinoma.<sup>5</sup>

## References:

1. Ghosh A, et al. Tumor target prostate specific membrane antigen (PSMA) and its regulation in prostate cancer. *J Cell Biochem.* 2004; 91:528-39.
2. Chang SS. Overview of Prostate-Specific Membrane Antigen. *Rev Urol.* 2004; 6:S13-8.
3. Silver DA, et al. Prostate-specific membrane antigen expression in normal and malignant human tissues. *Clin Cancer Res.* 1997; 3:81-5.
4. Bernacki KD, et al. The utility of PSMA and PSA immunohistochemistry in the cytologic diagnosis of metastatic prostate carcinoma. *Diagn Cytopathol.* 2014; 42:570-5.
5. Oh WJ, et al. Differential immunohistochemical profiles for distinguishing prostate carcinoma and urothelial carcinoma. *J Pathol Transl Med.* 2016; 50:345-54.

## Intended Use:

PSMA (EP192) Rabbit Monoclonal Primary Antibody is intended for laboratory use in the detection of the Prostate-Specific Membrane Antigen (PSMA) in formalin-fixed, paraffin-embedded tissue stained in qualitative immunohistochemistry (IHC) testing. This product is not a stand-alone diagnostic, and cannot be used for diagnosis, treatment, prevention, or mitigation of disease.

## Product Information:

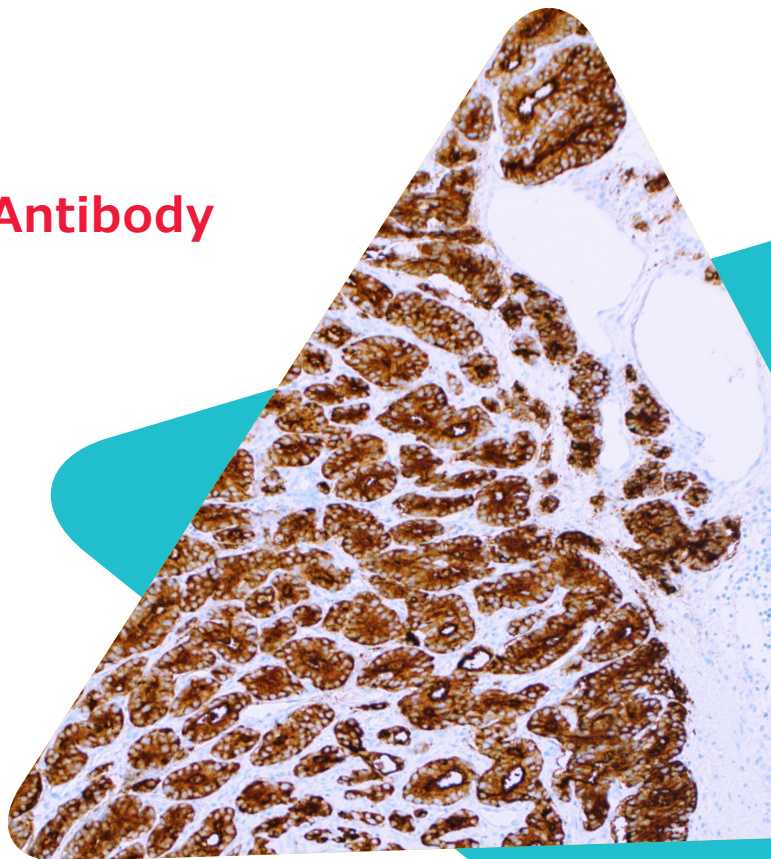
**Visualization:** Cytoplasmic, Membranous

**Controls:** Prostate

**Dilution Range:** 1:10-1:40

**Associated Specialty:** Genitourinary (GU) Pathology

**Synonyms:** Prostate-Specific Membrane Antigen

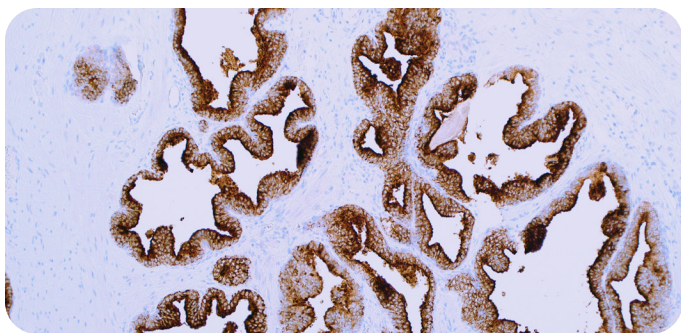


PSMA on prostate carcinoma.

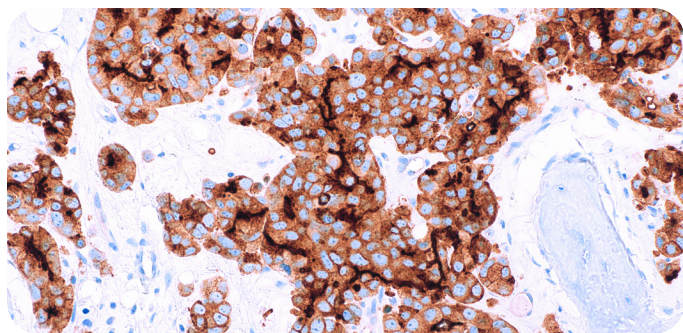
## Ordering Information

Description	Cat No.
0.1 mL concentrate	327R-14
0.5 mL concentrate	327R-15
1.0 mL concentrate	327R-16
1.0 mL predilute ready-to-use	327R-17
7.0 mL predilute ready-to-use	327R-18





PSMA on normal prostate.



PSMA on metastatic prostate carcinoma in bone.

**CELL MARQUE™**  
**RabMAb®**  
 Technology from Abcam

USA  
 Toll Free: 800.665.7284  
 Phone: 916.746.8900  
 Fax: 916.746.8900  
 Email: [service@cellmarque.com](mailto:service@cellmarque.com)  
[www.cellmarque.com](http://www.cellmarque.com)

CANADA  
 Phone: +1 916.746.8900  
 Fax: +1 916.746.8900  
 Email: [international@cellmarque.com](mailto:international@cellmarque.com)  
[www.cellmarque.com](http://www.cellmarque.com)

MilliporeSigma  
 400 Summit Drive  
 Burlington, MA 01803  
  
[www.sigmaaldrich.com](http://www.sigmaaldrich.com)

Copyright © 2020 Merck KGaA, Darmstadt, Germany and/or its affiliates. All Rights Reserved. MilliporeSigma, the vibrant M, Sigma-Aldrich and Cell Marque are trademarks of Merck KGaA, Darmstadt, Germany or its affiliates. All other trademarks are the property of their respective owners. Detailed information on trademarks is available via publicly accessible resources.

